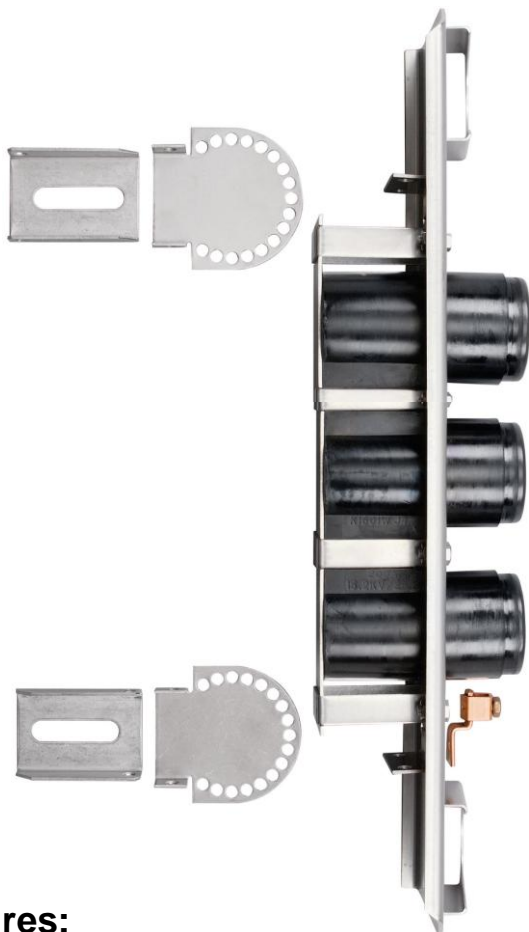


| | | | |
|---------|---|-----------------|----------|
| 15/25kV | 200A Loadbreak 3-Way Well Junction | w/ s.s. Bracket | K1601WJ3 |
|---------|---|-----------------|----------|



Features:

- 15/25kV, 200 Amp Loadbreak 3-Way Well Junction
- Fully shielded, fully submersible molded rubber housing
- 100% peroxide-cured construction includes insulation and conductive EPDM materials
- Provides mating for Elastimold® Elbow connectors through a variety of inserts
- Mounting hardware for flat or curved mounting positions

K1601WJ3 Loadbreak 3-Way Well Junction

Applications:

The Elastimold® loadbreak junctions, are fully shielded, fully submersible, separable insulated connectors designed for energized or de-energized operation. They are suitable for use on 15/25kV class systems and are designed to mate with other Elastimold® products including the following:

- 1601A4
- 2701A4
- 1602A3R
- 276BWP

Units are supplied with brackets which accommodate curved or flat surfaces and provide up to 60° of inclination.

Ratings:

Meets ANSI/IEEE Standard 386, Latest Revision

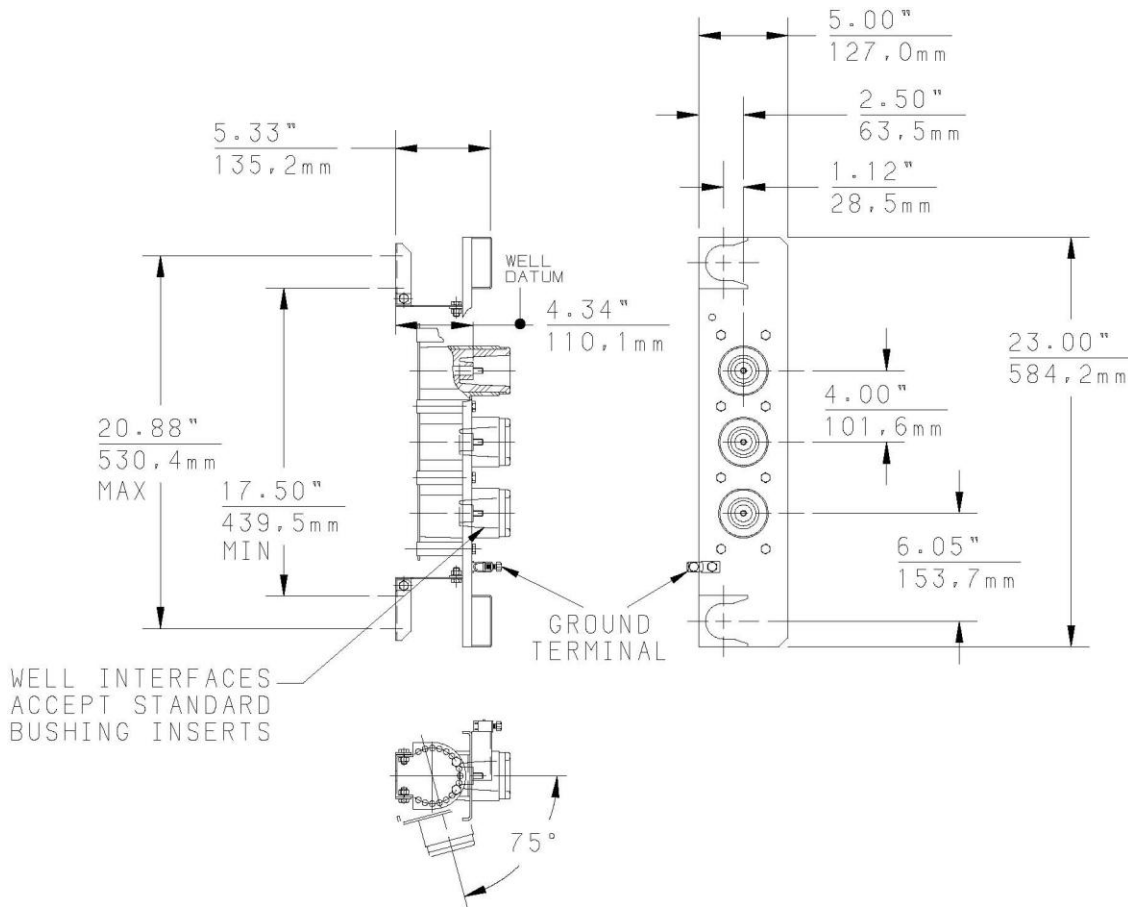
For 15kV Voltage Class:

8.3kV Phase-to-Ground – Operating Voltage
 14.4kV Max Phase-to-Phase
 95kV BIL – Impulse Withstand (1.2 x 50 microsecond wave)
 34kV AC – One minute withstand
 53kV DC – 15 minutes withstand
 11kV AC – Corona Extinction @ 3pC sensitivity
 200 Amp – Continuous and Loadbreak
 10kA Sym – 10 Cycles Momentary & Fault Close

For 25kV Voltage Class:

15.2kV Max Phase-to-Ground – Operating Voltage
 26.3kV Max Phase-to-Phase
 125kV BIL – Impulse Withstand (1.2 x 50 microsecond wave)
 40kV AC – One minute withstand
 78kV DC – 15 minutes withstand
 19kV AC – Corona Extinction @ 3pC sensitivity
 200 Amp – Continuous and Loadbreak
 10kA Sym – 10 Cycles Momentary & Fault Close

| | | | |
|---------|---|-----------------|-----------------|
| 15/25kV | 200A Loadbreak 3-Way Well Junction | w/ s.s. Bracket | K1601WJ3 |
|---------|---|-----------------|-----------------|



Each kit contains the following:

- | | | |
|---|--------------------------|------------|
| 1 | Basic molded junction | K1601WJ3-4 |
| 1 | Mounting hardware | K1601WJ3-6 |
| 1 | Tube, lubricant | 82-08 |
| 1 | Installation instruction | IS-0491 |

Ordering Instructions:

Specify **K1601WJ3** for 15/25kV, 200 Amp, 3-way Loadbreak Junction.

Add "-5" at the end of the catalog number for Junctions with "U" style mounting straps only.

Supplied with replaceable stud. Replacement stud available separately. Specify 1000-150.